

[www.handicappedtoilets.com](http://www.handicappedtoilets.com)  
[www.adataoilets.com](http://www.adataoilets.com)  
[www.adacomfortstations.com](http://www.adacomfortstations.com)  
[www.handicapcompliant.com](http://www.handicapcompliant.com)  
[www.portajohn.com](http://www.portajohn.com)  
[www.toilets.com](http://www.toilets.com)

## Table of Contents

Model WCADT 700 Drop Tank Handicapped Toilet – Page 2

Model WCACS 800 Handicapped Comfort Station Page 3

Model SCRT 4000 Shower/Toilet Combination Page 4 - 5

Model 7777 Single Stall ADA Compliant Building – Pages 6 – 8  
ADA Stall Drawing - Page 6  
ADA Stall Specifications – Page 8

Model FS 7777 ADA Family Stall Baby Changer Option – Page 9

Two Stall Building with Dual ADA Stalls – Page 10

All Buildings are Completely Mobile – Page 11  
**Excellent for Emergency Use in Natural Disasters**

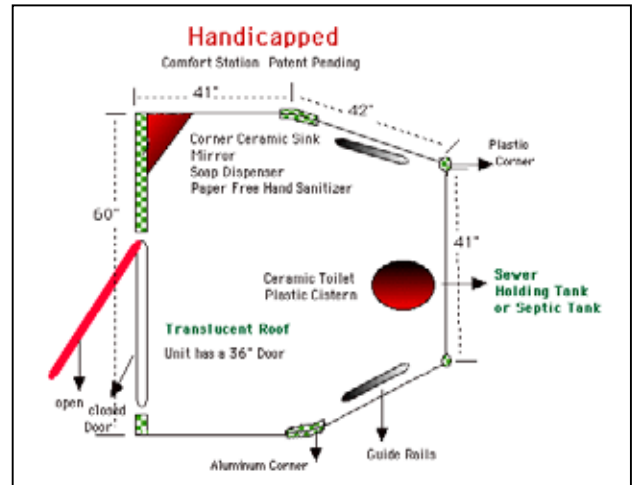
Three Stall Building with One or More ADA Stalls – Page 12  
Sewer or Holding Tank Hook-Up – Page 12

Three Stall Building Dimensions with ADA Stall – Page 13



[www.portajohn.com](http://www.portajohn.com)  
[www.toilets.com](http://www.toilets.com)

Model WCADT 700



## References

We were the exclusive sanitation manufacturer and service company for the 1996 Summer Olympic Games in Atlanta, Georgia; Woodstock '99 in Rome, New York; Air Shows; the 2003 Phish Concert in Lewiston, Maine; the 2004 Phish Concert in Newport, Vermont; 15 years as the Sanitation Contractor for the New Orleans Mardi Gras; most natural disasters from 1973 to the present; plus several hundred thousand smaller events over the last 35 years.

**Model 700 is shipped completely assembled on a platform that can either be removed or used permanently.**

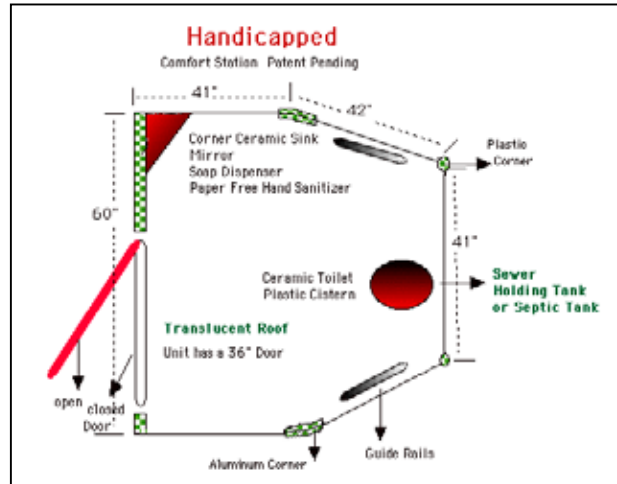
### Toilets.com, Inc. - Porta John®

Phone: 1-800-521-6310 Fax: 1-586-731-0670  
E-mail: [info@toilets.com](mailto:info@toilets.com) Web Site: [www.toilets.com](http://www.toilets.com)

Handicapped Comfort Station is a ground level, fresh water flush toilet with fresh water hand washing, paper towel and soap dispensers, and mirror as standard equipment.



Model WCACS 800  
Patent #6,271,967



## Handicapped Comfort Station

**Water source can be a garden hose or a water tank.**  
**Unit can be plumbed to a sewer, septic tank or holding tank.**



**Pros:** No Waste Storage in Lavatory Stall - No Steps - No Chemicals - No Odors  
Fresh Water Flush - Fresh Water Hand Washing - Soap & Towel Dispensers  
Mirror - Hygienic - Ramp-less - In-Line Hot Water Heater - Can be Plumbed  
to a Sewer, Septic Tank or Holding Tank - Ceramic Fixtures - No RV or Marine  
Fixtures

**Toilets.com, Inc. - Porta John®**

Phone: 1-800-521-6310 Fax: 1-586-731-0670

E-mail: [info@toilets.com](mailto:info@toilets.com) Web Site: [www.toilets.com](http://www.toilets.com)

# We Can Place This Anywhere

## Shower/Toilet Model **SCRT 4000**



### What You Need

**Water Source:** Garden Hose  
Your Hot Water Tank  
Our Installed Hot Water Tank

**Waste Disposal:**  
Our Holding Tank  
Your Sewer or Septic Tank Availability

### Any Way You Look

Inside View

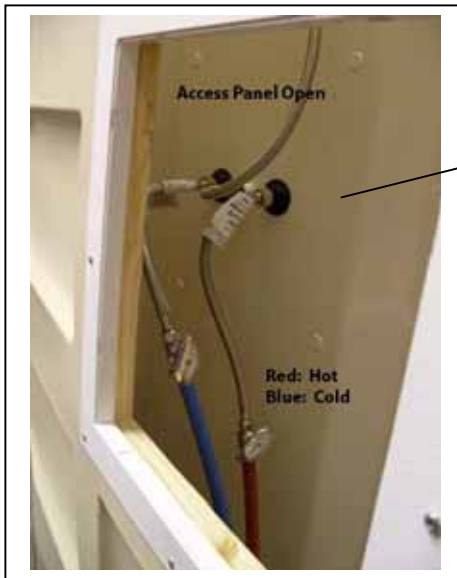


### Toilets.com, Inc. - Porta John®

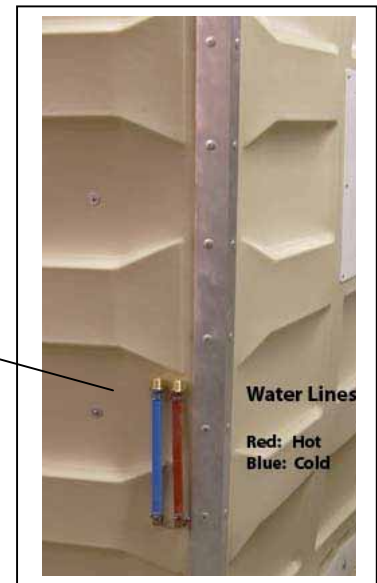
Phone: 1-800-521-6310 Fax: 1-586-731-0670

E-mail: [info@toilets.com](mailto:info@toilets.com) Web Site: [www.toilets.com](http://www.toilets.com)

# Exterior Views:



**Access Panel  
and  
Hot & Cold  
Water  
Intake Lines**



**Toilets.com, Inc. - Porta John®**  
Phone: 1-800-521-6310 Fax: 1-586-731-0670  
E-mail: [info@toilets.com](mailto:info@toilets.com) Web Site: [www.toilets.com](http://www.toilets.com)

# Model 7777



## ADA Compliant Lavatory Building

### Model 7777

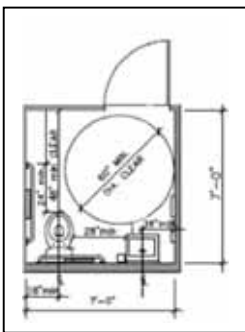
Dimensions: 7' x 7' x 7.5'  
[www.ADAComfortStation.com](http://www.ADAComfortStation.com)

- Steel Frame/ Tine Ports
- Laminate Wood Flooring
- Ceramic Sink
- Ceramic P-Trap Toilet
- ADA Compliant
- 30 AMP Electric Service
- Exhaust Fan /Switch
- AC/Heat Combo. Unit
- Soap Dispenser
- Paper Towel Dispenser
- Inside Door Lock

300 Gallon Holding Tank  
**(Includes Automatic Shut off Faucet)**  
Patent #6,731,967



Outside/Inside View ADA Single Unit



ADA Lavatory Stall Drawing

Inside View  
ADA Compliant  
Comfort Station  
Stall



ADA Lavatory Stall

**Toilets.com, Inc. - Porta John®**  
Phone: 1-800-521-6310 Fax: 1-586-731-0670  
E-mail: [info@toilets.com](mailto:info@toilets.com) Web Site: [www.toilets.com](http://www.toilets.com)

# Handicapped Ground Level Stall Specifications

**Lavatory Building/Handicap Stall** 7' x 7' (Maximum Privacy Stall)  
4" Steel Frame With Enclosed Steel Tine Ports for Easy Relocation  
Ceramic Toilet  
Plastic Water Saving Cistern  
Grab Bars on Both Sides of Ceramic Toilet  
Handicap Ceramic Sink with Paddle Handle Faucets - Sewer Hook-Up  
Automatic Shut Off Water Faucets - Holding Tank  
Automatic Soap & Paper Towel Dispensers - Large Capacity Toilet Paper Holder  
Mirror - Clothes Hooks - Waste Basket  
Linoleum Floor Covering - Scuff Resistant, Non-Slip  
Internal Plumbing  
Walls Constructed With Recycled, Non-Porous FRP  
Honeycomb Recycled Polypropylene  
Aluminum Covered Corners  
Aluminum or Stainless Steel Fasteners Throughout  
36" Composite Door/Paddle Handle & Inside Lock & Outside Key Lock for Off Hours  
2.5 Gallon Hot Water Heater  
60 Amp Electrical Service (English or US)  
Air Conditioning & Heat  
Automatic Exhaust Fan  
Safety Lights

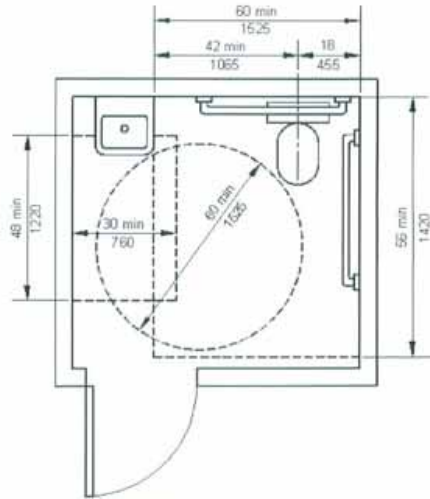
Model 7777 ADA Compliant Lavatory Building

**Toilets.com, Inc. - Porta John®**

Phone: 1-800-521-6310 Fax: 1-586-731-0670

E-mail: [info@toilets.com](mailto:info@toilets.com) Web Site: [www.toilets.com](http://www.toilets.com)

# ADA Compliant Single Stall Dimensions



ADA ICC/ANSI A117.1 + California Building Code  
Model 7777

## Standard Safety Features

### STANDARD SAFETY FEATURES:



Fire Extinguisher



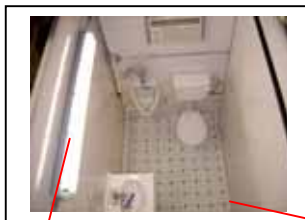
Smoke Detector



Door Locks/Deadbolt Locks



ADA Handle



Safety Light

[info@toilets.com](mailto:info@toilets.com)

Non-Skid Flooring



Emergency Mobile Sanitation

Porta-John®  
Presents:

# Family Restroom Building & Options

“When a Portable Toilet is Not Enough”



Three Stall Building 15'3" x 7' x 7.5'



Stall Dimensions 7' x 7' x 7.5'

**ADA Compliant**

- Baby Changer Station
- ADA Ceramic Sink & Bowl
- Grab Bars
- Vent Fan
- Heat & Air Combo
- Two Mirrors
- Towel & Soap Dispensers
- Fire Extinguisher
- Smoke Detector
- Coat Hooks

[www.familyrestroom.com](http://www.familyrestroom.com)  
[www.familylavatory.com](http://www.familylavatory.com)  
[www.familybathroom.com](http://www.familybathroom.com)

Ground Level – Rampless ADA Stall  
Fresh Water Flush & Hand Wash  
**No Chemicals or RV Fixtures**

Patents Issued & Pending



**Family Restroom Single Stall Building**

**Toilets.com**

Phone: 1-800-521-6310

Fax: 1-586-731-0670

E-mail: [info@toilets.com](mailto:info@toilets.com) Web Site: [www.toilets.com](http://www.toilets.com)



Exhaust Fan

Air & Heat Combo

Towel & Soap  
Dispensers

ADA Sink

ADA Toilet

Floor Drain

Mirror Not Shown

## Two Stall Building Dual ADA Men's and Women's Lavatories



ADA Door Handles



Safety Light – Non-Skid Floor



Exterior Frontal View



ADA Drinking Fountain Option



Smoke Detector



Fire Extinguisher & Coat Hooks

**Toilets.com, Inc.**  
 Phone: 1-800-521-6310 Fax: 1-586-731-0670  
 E-mail: [info@toilets.com](mailto:info@toilets.com)  
 Web Site: [www.toilets.com](http://www.toilets.com)



Fig. 1 - Picking Up By Tine Ports



Fig. 2 - Tine Ports (Steel Frame)

Dimensions Bldg Shown: 12' 3" x 7' x 7' 5" High  
Standard Dimensions: 10'3" x 7' x 7'5"

**Lavatory Buildings Can Be Relocated for Disasters**



Fig. 3 - Preparing To Ship



Fig. 4 - Loaded on Trailer



Fig. 5 - Easy Ground Level Connection

**Toilets.com, Inc.**  
Phone: 1-800-521-6310 Fax: 1-586-731-0670  
E-mail: [info@toilets.com](mailto:info@toilets.com)  
Web Site: [www.toilets.com](http://www.toilets.com)



## Three Stall Lavatory Building

Family & ADA Stall

**Toilets.com – Porta John®**

Phone: 1-800-521-6310 Fax: 1-586-731-0670

E-mail: [info@toilets.com](mailto:info@toilets.com)

Web Site: [www.toilets.com](http://www.toilets.com)

3 Stall Building 15'4" x 7.5' x 7.5' Tall  
Three Inch Overhang All Around



Women's Stall 1



Men's Stall 1



ADA Compliant Stall 1



Septic Tank or Sewer Hook-Up

