

How It Works
Patent #6,721,967

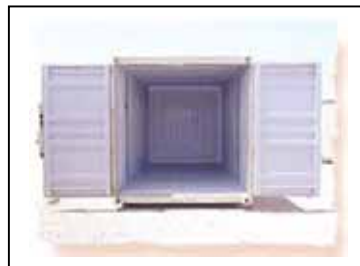
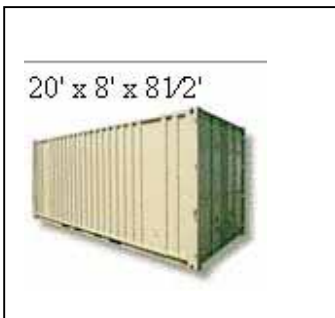


Holding Tank

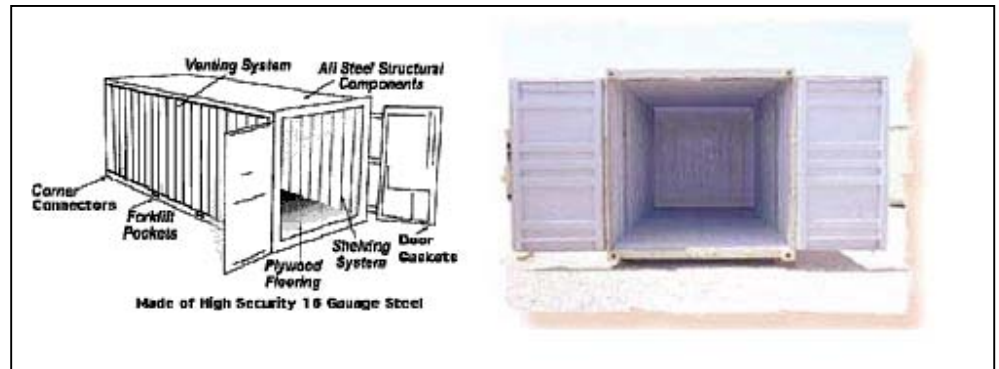
Specifications AIO 208s:

- Electrical Service 50 Amps
- Overhead Light
- Two Outlets
- Divider Wall/Door
- One Add-A-Bathroom with Enclosure
- Carpeting or Linoleum
- Holding Tank
- Patent #6,721,967
- Options Requested but Not Quoted

Window Without Security Bars \$560.00 Security Bars \$188.00 on Window Steel Security Door \$940.50 In Line Hot Water Heater \$510.00



Toilets.com, Inc.
 Phone: 1-800-521-6310 Fax: 1-800-437-9220
 E-mail: info@toilets.com Web Site www.toilets.com



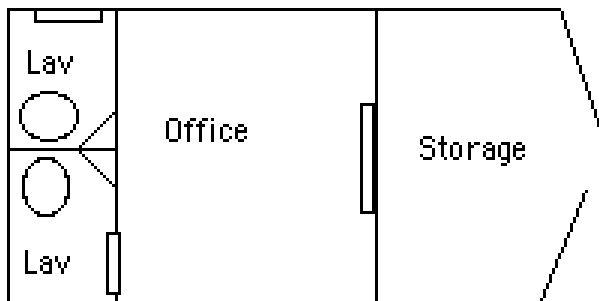
Toilets.com, Inc.
Phone: 1-800-521-6310 Fax: 1-800-437-9220
E-mail: info@toilets.com Web Site www.toilets.com

All In One Site Management Solution



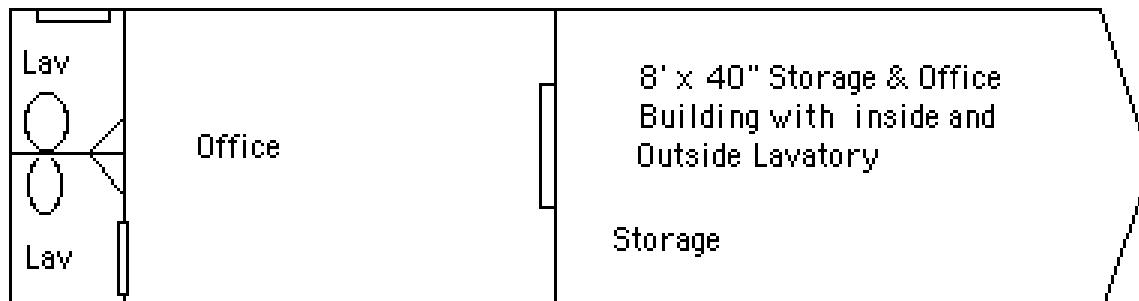
8' x 20' Storage
Inside and out side Lavatory

Patent Pending



8' x 20' Storage & Office
Inside and out side Lavatory

All Units are Ground Level Fresh Water Flush Systems



8' x 40' Storage & Office
Building with inside and
Outside Lavatory

Storage

Lavatories can be plumbed to our holding tank, septic system or sewer. Water source can be a garden hose or water tank.